

# Parents and School Choice: Family Strategies, Segregation and School Policies in Chilean and Finnish Primary Schooling (PASC)

Funded by: CONICYT Chile and AKA Finlandia

AKA-CONICYT  
March 24, 2015

Alejandro Carrasco  
Catholic University of Chile

# The team

**Prof. Hannu Simol**

**Prof. Risto Rinne**

**Dr. Heikki Silvennoinen**

**Dr. Jaana Poikolainen**

**Dr. Piia Seppanen**

**Dr. Janne Varjo**

**Dr. Sonja Kosunen**

**Sari Silmari-Salo**

**Dagmar Raczynski Von Oppen**

**Alejandro Carrasco**

**Carolina Flores Cordero**

**Javier Corvalán Rodríguez**

**Alejandra Falabella Ambrosio**

**Manuel Tironi Rodó**

# Conceptual and Empirical Work

## Families decision-making

- Sociology of education and policy sociology
- Survey in Helsinki, Vanta and Espoo
- Survey in Santiago
- Interviews in Helsinki, Vanta and Espoo
- Ethnography in Santiago

# Academic Interaction

- Diciembre 2010, Santiago de Chile, Visita del Equipo Finés
- Septiembre 2012, Cádiz, España, Meeting and Symposium, (Equipo Chileno y Finés)
- Diciembre 2012, Santiago de Chile, PASC equipo Chileno
- Junio 2013, Turku, Finlandia, reunión de Trabajo equipo Chileno y Finés
- Octubre 2013, Helsinki, Visita A. Carrasco Helsinki
- Enero-Marzo 2014, Visita Académica de Sonja Kosunen a CEPPE UC
- Septiembre 2014, Porto, Portugal, Reunión de Trabajo Equipo Chileno y Finés

# Some examples...Joint papers

- Kosunen, S. & Carrasco, A. (2014) “Parental preferences in school choice: comparing reputational hierarchies of schools in Chile and Finland”, *Compare: A Journal of Comparative and International Education*, DOI: 10.1080/03057925.2013.861700
- Argüelles, P. & Hannus, S. (in process). Students’ School Representations and Forms of Visuality in School Spaces Located in Diverse Socio-economic areas in Santiago. *Journal of Education Policy*. (ISI)

# CONTRASTING DYNAMICS IN EDUCATION POLITICS OF EXTREMES: SCHOOL CHOICE IN CHILE AND FINLAND

*Edited by Pii Seppänen, Alejandro Carrasco, Mira  
Kalalahti, Risto Rinne & Hannu Simola*

Rotterdam: SENSE Publishers

*In press, to be published 2015*

THIS BOOK ENHANCE UNDERSTAND OF OVER-NATIONALLY  
TRAVELLING POLICY SCHOOL CHOICE BY EXPLORING IT IN ITS  
TRAILBLAZER COUNTRY LATIN AMERICAN CHILE AND 'EUROPEAN  
PISA-LEADER' COUNTRY FINLAND BY WIDE RANGE OF SOCIOLOGISTS  
OF EDUCATION.



## Sense Publishers B.V.

### EDITOR'S CONTRACT

An Agreement made this 13 day of December 2013 by and between

Piia Seppänen  
University of Turku  
Assistentinkatu 5  
20014 Turku Finland

Mira Kalalahti  
University of Helsinki  
Institute of Behavioral Sciences  
Siltavuompenger 3A  
246 Helsinki Finland

Alejandro Carrasco  
Macul  
Faculty of Education  
Vicuna Mackenna 4860  
Campus San Joaquin  
Santiago, Chile

Risto Rinne  
Assistentinkatu 5  
20014 Turku, Finland

Hannu Simola  
P.O. Box 9, Siltavuorenpenger 5 A  
FI-00014 University of Helsinki, Finland

hereinafter referred to as 'the Editor'  
(if more than one editor, 'the Editor' shall be read as 'the Editors') and  
Sense Publishers, PO Box 21858, 3001 AW Rotterdam, The Netherlands,  
hereinafter referred to as 'the Publisher'

WHEREBY in consideration of the mutual covenants and obligations herein contained, the Parties hereto agree as follows:

#### Manuscript

1. The Editor agrees to edit (has edited) a work in the English language, provisionally entitled:

**Contrasting Dynamics in Education Politics of Extremes  
*School choice in Finland and Chile***

hereinafter referred to as 'the Work', which term shall include the text and all illustrations, artwork, indices, appendices, charts, tables, and other materials which are necessary for completion of the book.

The Editor agrees to deliver to the Publisher 1 (one) complete, original version of the work in electronic format, prepared according to the 'Instructions to Editors' to be supplied by the Publisher, and accompanied by appropriate illustrative material and instructional aids, all of which must be acceptable to the Publisher in form and content, on or before June 2014

2. Should delivery of the manuscript be delayed by more than 12 (twelve) months, consultation will take place between the Editor and the Publisher with a view to deciding whether new circumstances have arisen which might tend to affect adversely the sale of the book and whether these factors are sufficiently important to warrant termination of the agreement.
3. The complete manuscript will yield about 200 printed pages including diagrams, formulae, tables and/or black and white illustrations.
4. The Editor further agrees:
  - a. to take care that diagrams, maps, drawings, charts and photographs are provided in a form ready for immediate reproduction.
  - b. that literature references shall be consistent and composed in accordance with the generally accepted practice among authors in the subject field, following instructions by the Publisher.

# Advertisement for the back

- This book aims to enhance understand of over-nationally travelling policy *school choice* by exploring it in extremely different societies: Latin American Chile and North European Finland. Chile was the first country that introduced school choice policies early 1980s and did it with ultimate extent whereas Finland was among the last in the mid-1990s and very moderate. In Chile dominance in organizing basic schooling is among for-profit and non-profit private and municipal organisations, parental co-payment and ranking lists. Finland is stubborn in holding education under public authorities, free-of-charge as well as prohibiting profit making and rankings.

- 

-



(Cont.)

- In this book the chapters by wide range of sociologists of education introduces novel analysis and perspectives on the operation of school choice policy in its trailblazer country Chile and in ‘European PISA-leader’ country Finland. Chilean and Finnish contributors of chapters pursue to understand how policy of school choice is displayed and used explicitly for very different purposes but implicitly following similar patterns in different countries surrounded by their historical construction, politics and culture. Empirically the focus is on insights how families view and act on school choice drawing on large surveys, interviews and ethnographic data in urban Chile and Finland. Capitalising on the concept of *dynamics*, the book concludes how such a globally travelling education policy as school choice has be materialised in two apparently dissimilar societies and their localities.

## **Introduction**

Piia Seppänen, Alejandro Carrasco, Mira Kalalahti, Hannu Simola & Risto Rinne

## **Part 1. Conceptualizing school choice and historical approach to local educational contexts**

### Chapter 1

Agnès van Zanten: The determinants and dynamics of school choice: A comparative review

### Chapter 2

Jaakko Kauko, Javier Corvalán, Hannu Simola & Alejandro Carrasco: The historical dynamics in Chilean and Finnish basic education politics

### Chapter 3

Alejandro Carrasco, Piia Seppänen, Risto Rinne & Alejandra Falabella: Educational accountability in Chile and Finland: divergent policy principles framing their school choice policies

## **Part 2. Comparing Chile and Finland**

### Chapter 4

Risto Rinne, Alejandro Carrasco & Carolina Flores: Something universal? Contrasting family attitudes to market-based reforms and parental choice in two very different societies

### Chapter 5

Alejandra Falabella, Piia Seppänen & Dagmar Raczynski: Growing tolerance of pupil selection: Parental discourses and exclusionary practices in Chile and Finland

### Chapter 6

Sonja Kosunen, Alejandro Carrasco & Manuel Tironi: The role of 'hot' and 'cold' knowledge in the choice of schools in Chilean and Finnish cities

### **Part 3. School choice in Chile and Finland**

#### Chapter 7

Janne Varjo, Mira Kalalahti & Heikki Silvennoinen: The middle classes, municipalities and democratic iterations on Right to Education and Freedom of Education

#### Chapter 8

Carolina Flores, Manuel Alcaíno & Alejandro Carrasco: Going the extra-mile: Parental preferences for extra-local schools in Chile

#### Chapter 9

Mira Kalalahti, Heikki Silvennoinen, Janne Varjo & Risto Rinne: Education for all? Urban parental attitudes towards Universalism and Selectivism in the Finnish comprehensive school system

#### Chapter 10

Jaana Poikolainen & Sari Silmäri-Salo: Contrasting choice policies and parental choices in Finnish case cities

#### Chapter 11

Alejandro Carrasco, Alejandra Falabella & Manuela Mendoza: School choice in Chile as a sociocultural practice: an ethnographic inquiry

### **Conclusions**

Piia Seppänen, Alejandro Carrasco, Mira Kalalahti, Risto Rinne, Hannu Simola & Dagmar Raczynski

# Public impact in Chile

- MENSAJE N°131-362/ DE S.E. LA PRESIDENTA DE LA REPÚBLICA CON EL QUE INICIA UN PROYECTO DE LEY QUE REGULA LA ADMISIÓN DE LOS Y LAS ESTUDIANTES, ELIMINA EL FINANCIAMIENTO COMPARTIDO Y PROHIBE EL LUCRO EN ESTABLECIMIENTOS EDUCACIONALES QUE RECIBEN APORTES DEL ESTADO, SANTIAGO, 19 de mayo de 2014.
- Strong empirical evidence claiming that there are policy barriers, and classed-based inequalities, to the practice of school choice.



Increasing private participation

## Summing up....

Is parental choice activating markets and working as an accountability strategy, pushing schools to improve and changing school quality such as economic theory entails?

# Final remarks

1. Choice as a relational and sociocultural practice:

*it's not abstract, neither about pedagogy or leadership; it is social-class based, it's produce in relation to others...*

2. Choice as an affective, material and hetero-agentic practice:

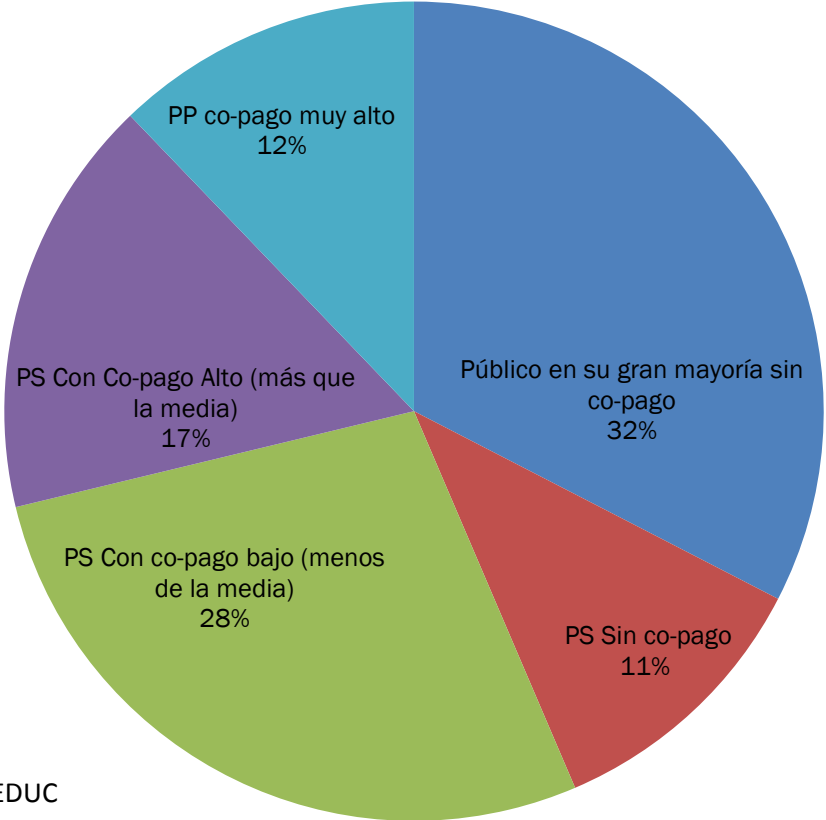
*Collective decision-making, bodies and infrastructure as markets, negotiations, anxiety, identity risky*

3. Choice as an active lateral self-segregation practice:

*Micro-distinctions, des-identification, active performativity of identities*

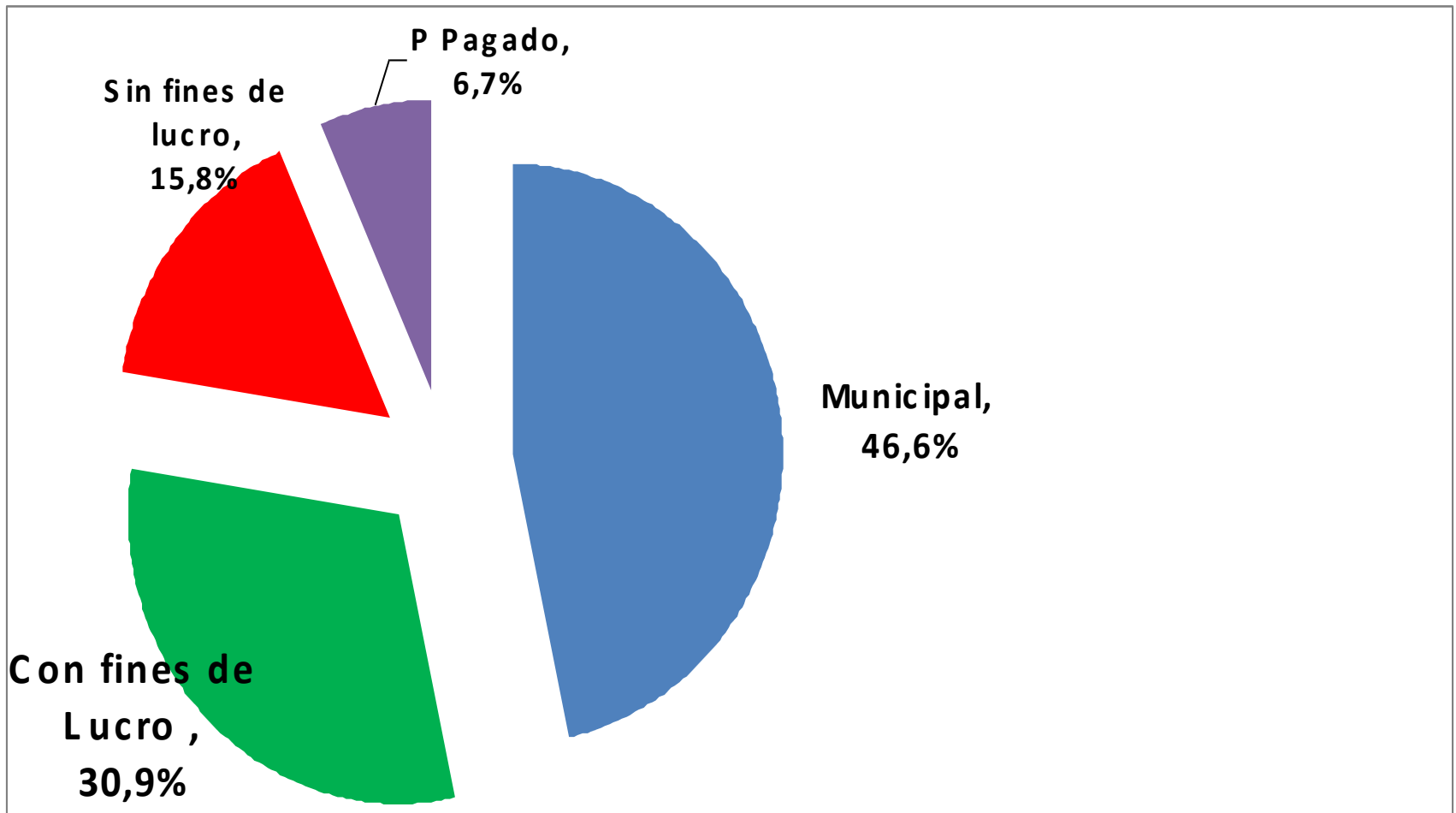


# Tipos de establecimientos según dependencia y co-pago (RM)



Fuente: MINEDUC

# For-profit subsidized private schools

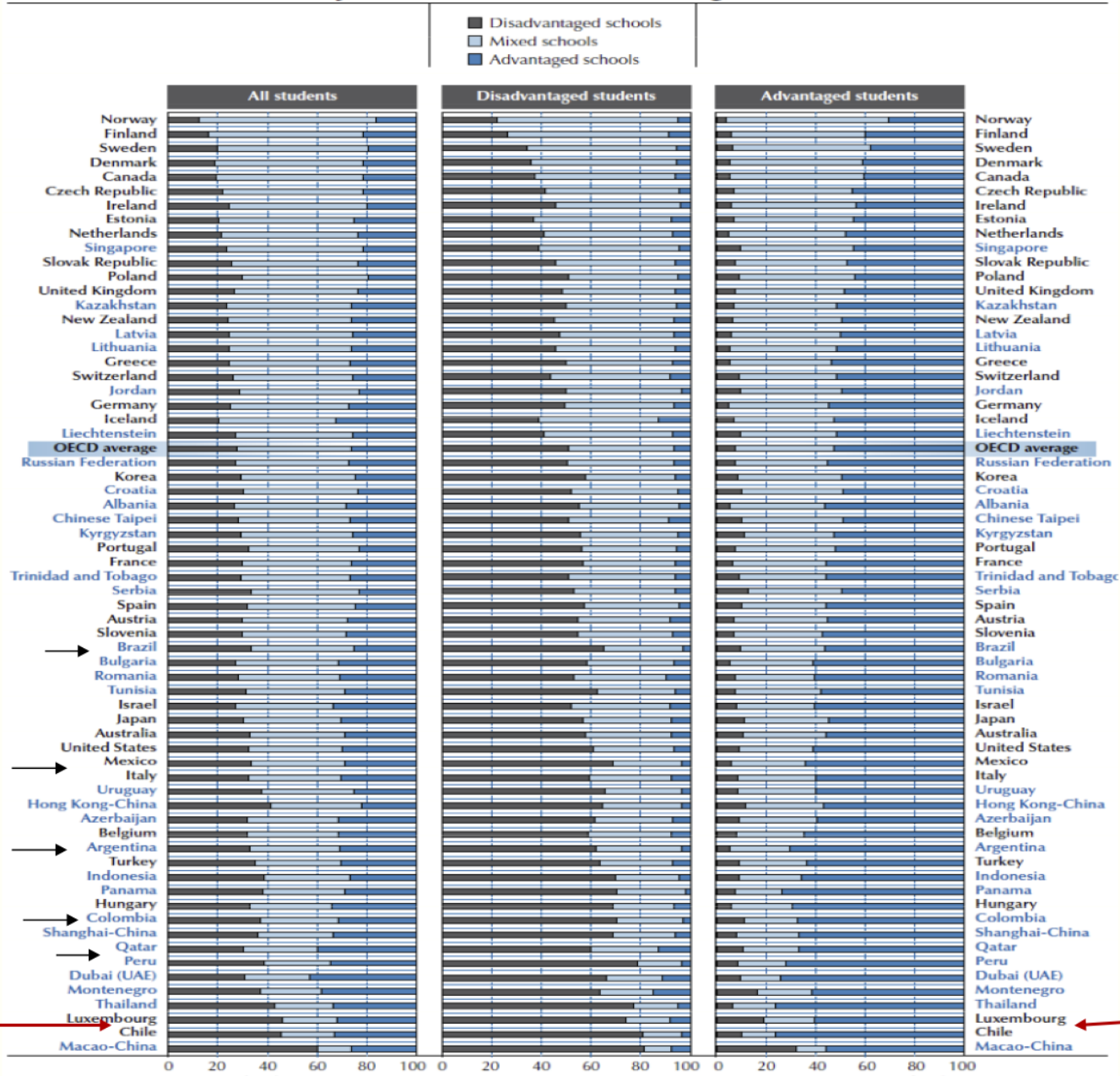


# Growing for-Profit schools ...1990 y 2008

	1990		2008		Variación 1990-2008	
	N	Matrícula	N	Matrícula	N	Matrícula
Municipal	5696	1231805	5128	979393	10%	-20%
<b>Con Fines de Lucro</b>	<b>1370</b>	<b>359314</b>	<b>2441</b>	<b>649874</b>	<b>78%</b>	<b>81%</b>
Sin Fines de Lucro	609	258774	803	332236	32%	28%
Particular Pagado	525	150999	442	141227	-16%	-6%
<b>Total</b>	<b>8200</b>	<b>2000892</b>	<b>8814</b>	<b>2102730</b>	<b>84%</b>	<b>82%</b>

Fuente: Corvalán y Elacqua (2008)

Percentage of students in disadvantaged, mixed and advantaged schools, by students' socio-economic background



40

# Three empirical studies

1. Parental choice: survey to parents choosing
2. School selection: survey to headteachers
3. Public/private schools performance: valued-added asesment

# **1. Parental choice: survey to parents choosing**

# Research desing

- Análisis de preferencias reveladas a través de un **set de elección** de colegios que son posteriormente caracterizados con datos secundarios
- Preferencias pre-elección, no “contaminadas” por restricciones externas a la elección (elección previa o selección por parte de las escuelas)
- N1= 750 (primera transición) N2=400 (segunda transición)
- Región Metropolitana
- Terreno: Octubre- Noviembre 2011

# Restricciones a la elección

1. Financiamiento Compartido

2. Desajuste Espacial



## II. Restricciones a la elección

### 1. Financiamiento Compartido

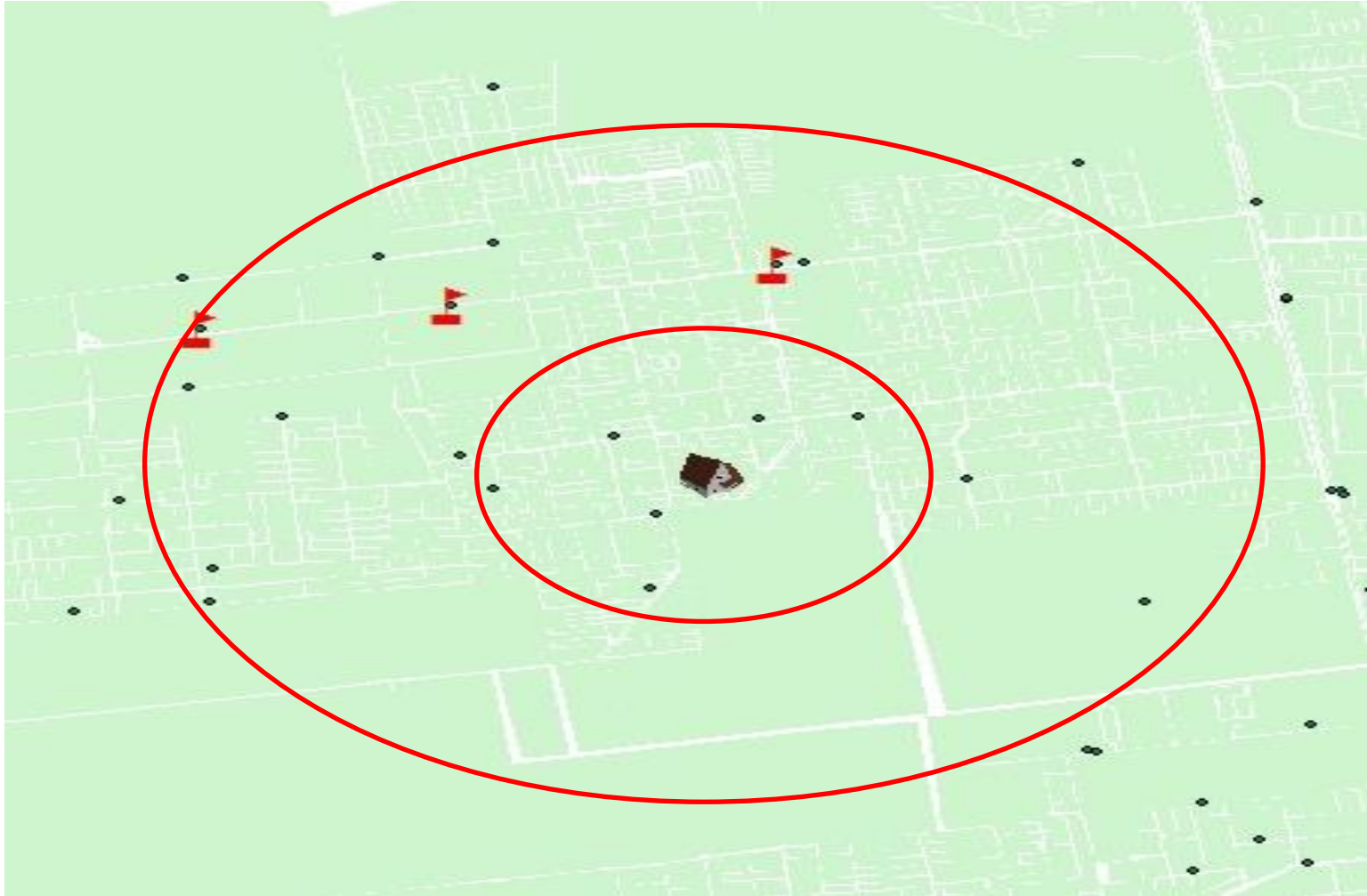
- Contexto restricción presupuestaria del sector (1993)
- Incentivo para atraer a privados en marco provisión mixta
- ‘Derecho’ padres en modelo público de focalización del gasto

### 2. Desajuste Espacial

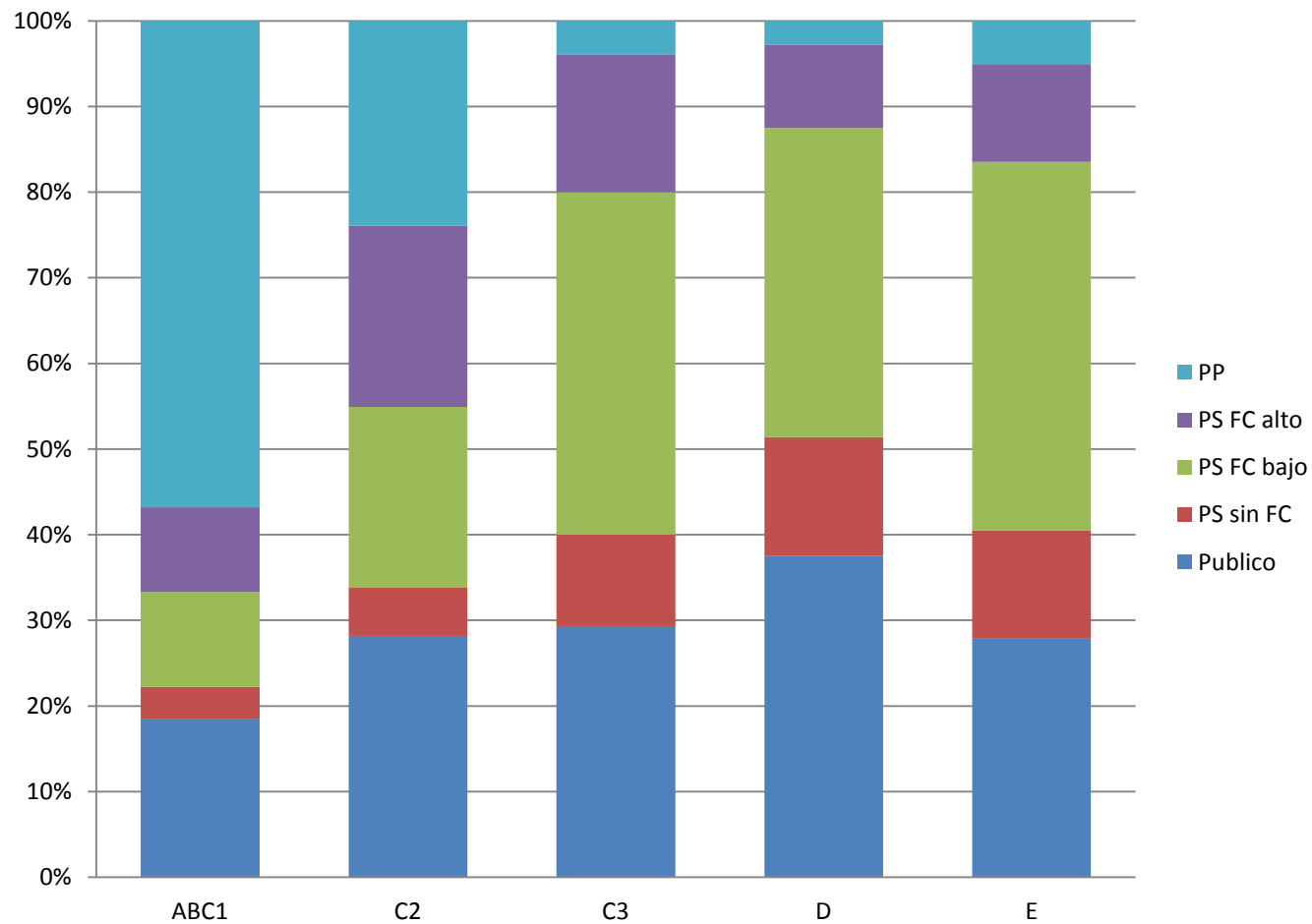
En un sistema sin choice (asignación territorial de escuelas), la segregación escolar será tan alta como la segregación residencial:

- Choice breaks the influence of the characteristics of local supply, mostly in high-poverty areas, since parents are able to choose a [better] school outside the catchment area (Coons y Sugerman, 1978; Finn, 1990; Moe, 2001).
- Spatial Mismatch (Kain, 1968; Wilson, 1987). Good schools are often far away from where poor families reside. Choice is “geographically naïve and therefore socially regressive” (Pacione, 1997) since it does not account for transportation costs and information assymetries

# Buffer de 1km y Max del Centroide encuestado



## Nivel de copago (schools within tolerable distance)

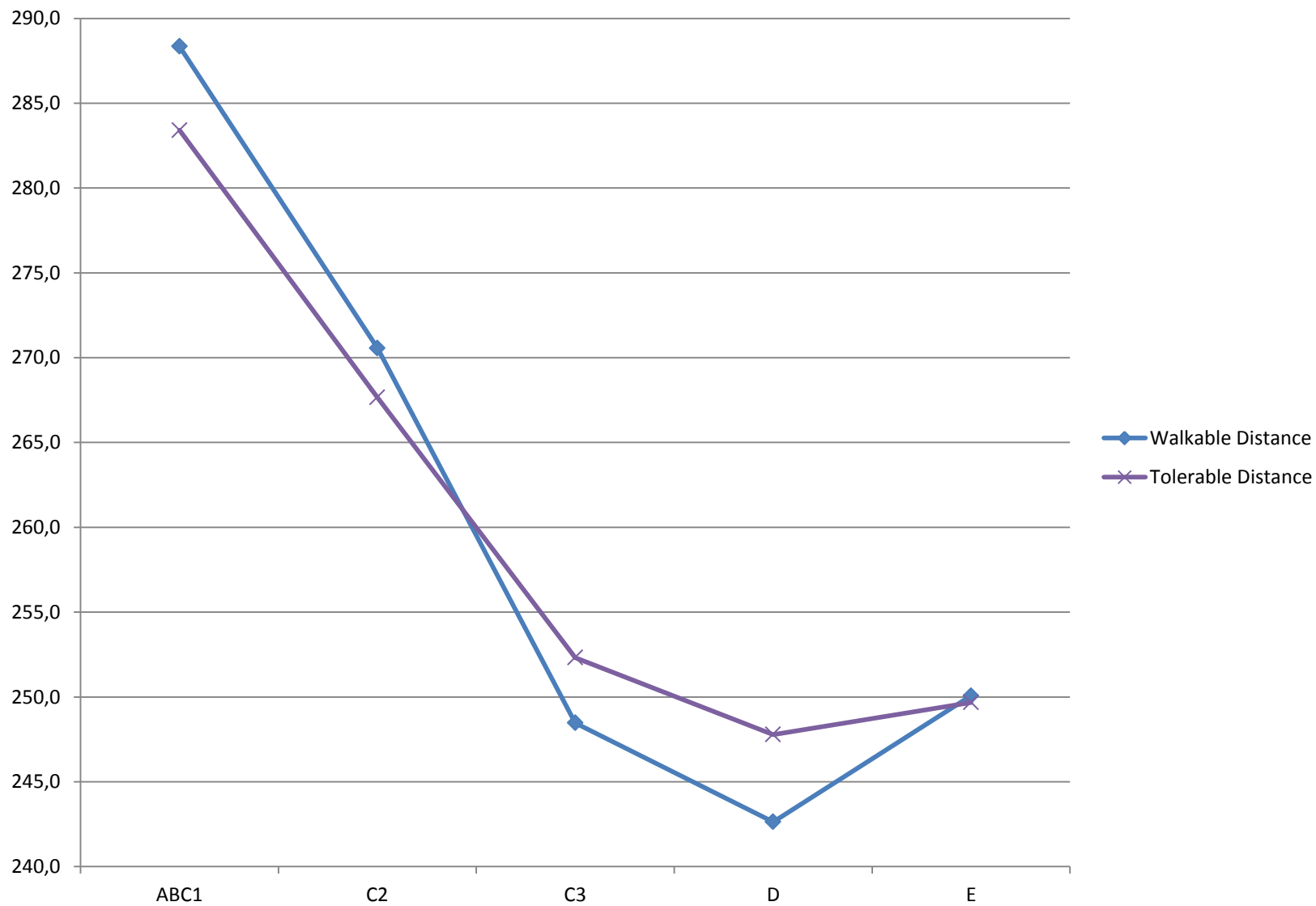


Source: own elaboration based on Ministry of Education and PASC

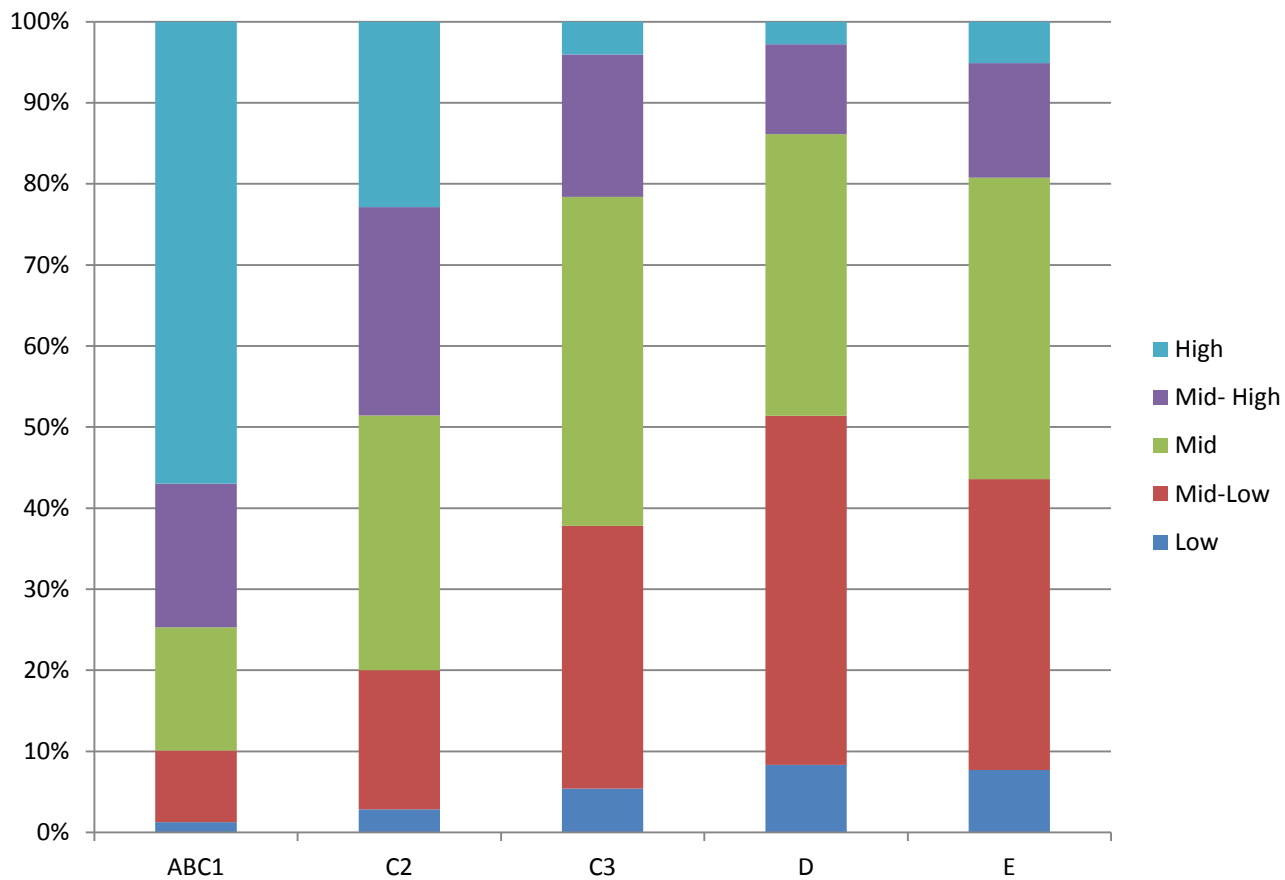
# 1. Financiamiento Compartido

- Es posible que los padres se informen sólo de las escuelas que pueden pagar. Esto se reflejaría en diferencias sistemáticas de preferencias entre padres con distinta capacidad de pago.
- El co-pago tiene un valor simbólico que potencialmente afecta las preferencias
- Poder regulatorio de la oferta sensible al capital económico familias

# Achievment: Average SIMCE of local schools

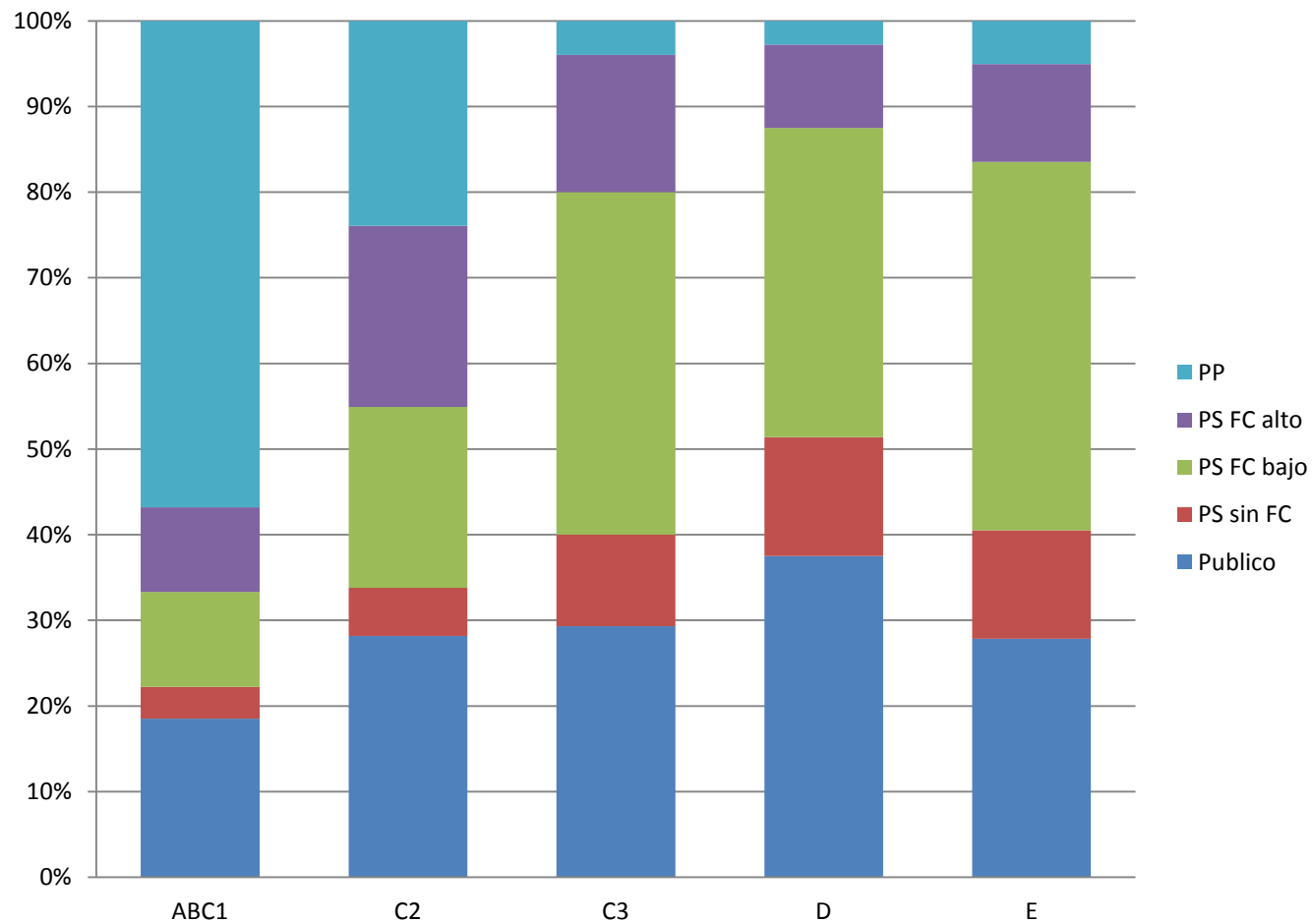


# NSE colegio (schools within tolerable distance)



Source: own elaboration based on Ministry of Education and PASC

## Nivel de copago (schools within tolerable distance)



Source: own elaboration based on Ministry of Education and PASC

## 2. Desajuste espacial en oportunidades educativas

- Alta segregación urbana, ausencia de regulación respecto a la ubicación de escuelas
- No todos los padres acceden a la misma oferta local por escuelas. La oferta está segmentada lo que genera tracks diferenciados de información y decisión y costos de transporte muy altos asociados a elegir escuelas no disponibles a nivel local
- Descripción oferta local (dentro de la distancia definida por cada respondente: distancia tolerable)



### III. Análisis de preferencias relativas

#### Modelos RE

- Modelo 1: Variable dependiente es puntaje SIMCE de escuela preferida
- Modelo 2: Variable dependiente es puntaje SIMCE de escuela preferida. Incluye características de oferta local
- Modelo 4: Variable dependiente es puntaje SIMCE de escuela preferida, normalizada por nivel de co-pago

		Standardized SIMCE				Standardized and Normalized SIMCE			
		Modelo 1		Modelo 2		Modelo 3		Modelo 4	
Constante		-0,179	ns	-0,138	ns	0,719	***	-2,746	***
SES (Mid)	High	0,913	***	0,543	***	0,351	**	-0,097	ns
	Mid- High	0,466	***	0,285	***	0,207	ns	0,000	ns
	Mid- Low	-0,072	ns	-0,010	ns	0,116	ns	0,202	*
	Low	-0,376	***	-0,319	***	-0,247	*	-0,161	ns
Education (high school	Primary or less	-0,303	***	-0,215	***	-0,379	***	-0,275	**
	Tertiary technical	0,244	***	0,234	***	0,086	ns	0,083	ns
	Tertiary/ University	0,539	***	0,477	***	0,083	ns	0,028	ns
Number of preferences in set		0,073	**	0,073	***	-0,008	ns	-0,007	ns
Years in residence (Z score)		0,007	ns	0,008	ns	0,039	ns	0,046	ns
Religion	Catholic	0,216	***	0,149	**	0,333	***	0,257	**
	No religion	0,184	*	0,143	ns	0,362	**	0,316	**
Child's age		-0,130	***	-0,102	***	-0,110	***	-0,078	*
Child's sex (Female)		0,066	ns	0,050	ns	0,103	ns	0,084	ns
Disabilty (no)		0,105	ns	0,036	ns	0,257	ns	0,150	ns
Declared preference for school achievment (Z score)				0,053	**			0,047	ns
Declared preference for school discipline (Z score)				-0,015	ns			-0,035	ns
Declared preference for school prestige (Z score)				0,056	**			0,086	**
Local schools' average achievment (z score)				0,229	***			0,014	***
Distance to school (Z score)				0,040	ns			0,012	ns
High SES				0,035	ns			0,172	ns
Mid- High SES				0,030	ns			0,017	ns
Mid- Low SES				0,164	**			0,304	***
Low				0,240	***			0,355	***

Source: own elaboration based on Ministry of Education and PASC

# Key policy features

- School competence: universal voucher
- Mixed provision: municipal, subsidized private and private
- Parental choice: performance public information SIMCE
- Co-paymet: PS schools can charge a tuition fee
- School selection: school control on admisions
- New accountability system: school clasification of performance (schools can be closed)